



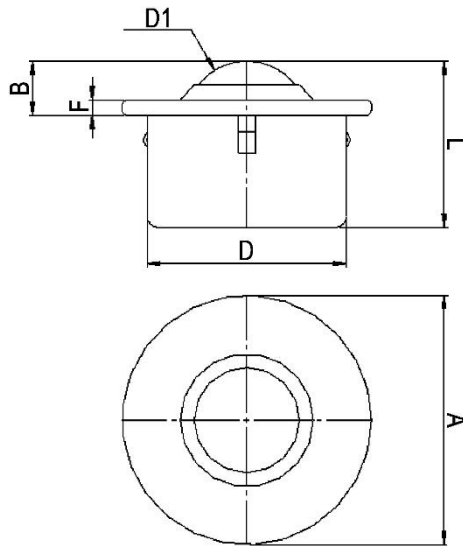
*"Experts in Specialist
Wheels & Tyres"*

PRODUCT INFORMATION

Steel Ball Unit with Push Fit Fixing

Material: Load ball: Carbon Chrome. Small balls: Carbon Chrome. Body: Carbon steel with zinc plated finish.

Part number:	522213
Load ball diameter (D1):	22.2mm
Flange diameter (A):	45mm
Working height of ball (B):	9.8 ±0.2mm
Body diameter (D):	36 ±0.2mm
Flange thickness (F):	2.8mm
Overall height (L):	30mm
Load capacity (ball up):	180kg



**Suggested seating hole size of
Ø37mm to Ø37.5mm with a table
top material thickness of 3mm.**

Telephone: (353) 1 452 0482
Email: info@parnells.eu

www.parnells.eu

Unit A1 - A2
Southcity Business Centre
Whitestown Way
Tallaght
Dublin D24 HT95
Ireland