



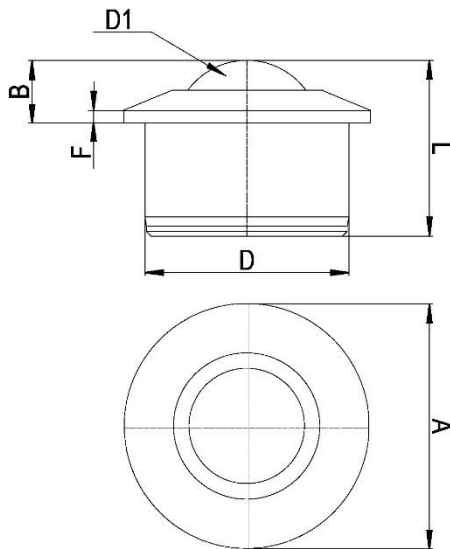
*"Experts in Specialist
Wheels & Tyres"*

PRODUCT INFORMATION

Steel Ball Unit with Push Fit Fixing

Material: Load ball: Stainless steel. Small balls: Stainless steel. Body: Carbon steel with zinc plated finish.

| | |
|------------------------------------|-----------|
| Part number: | 8004516 |
| Load ball diameter (D1): | 44.5mm |
| Flange diameter (A): | 75mm |
| Working height of ball (B): | 19mm |
| Body diameter (D): | 62 ±0.1mm |
| Flange thickness (F): | 3.8mm |
| Overall height (L): | 53.5mm |
| Load capacity (ball up): | 850kg |



Telephone: (353) 1 452 0482
Email: info@parnells.eu

www.parnells.eu

Unit A1 - A2
Southcity Business Centre
Whitestown Way
Tallaght
Dublin D24 HT95
Ireland