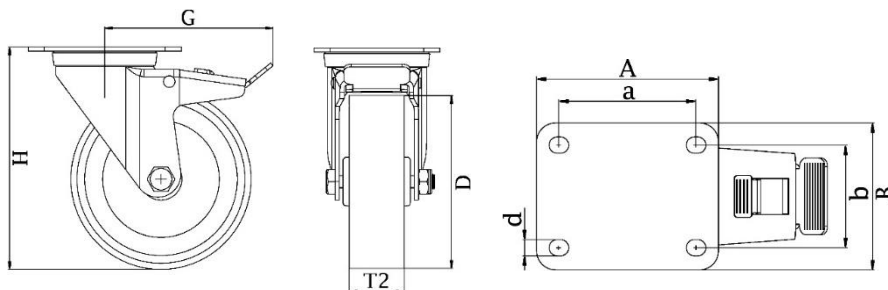


PRODUCT INFORMATION

800-Series Top Plate Castor

Elastic rubber on reinforced nylon centre wheel

Part number:	230007
Wheel diameter (D):	125mm
Tread width (T2):	50mm
Tread hardness:	65° Shore A
Wheel bearing:	Ball bearings
Top plate size (AxB):	135x110mm
Fixing hole spacing (axb):	105x75-80mm
Fixing hole size (d):	11mm
Brake pedal radius (G):	162mm
Overall height (H):	178mm
Load capacity 3km/h:	320kg
Rolling resistance:	Very good
Operating noise:	Very good
Floor preservation:	Very good



Telephone: (353) 1 452 0482
Email: info@parnells.eu

www.parnells.eu

Unit A1 - A2
Southcity Business Centre
Whitestown Way
Tallaght
Dublin D24 HT95
Ireland