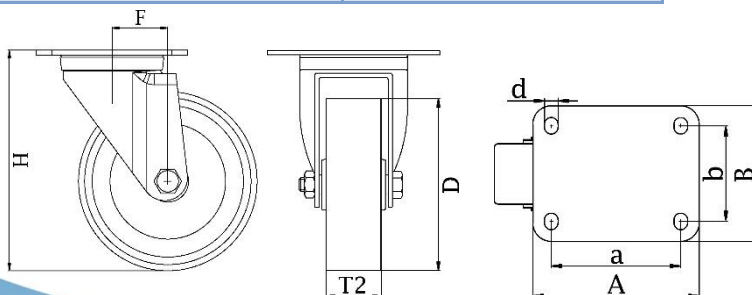
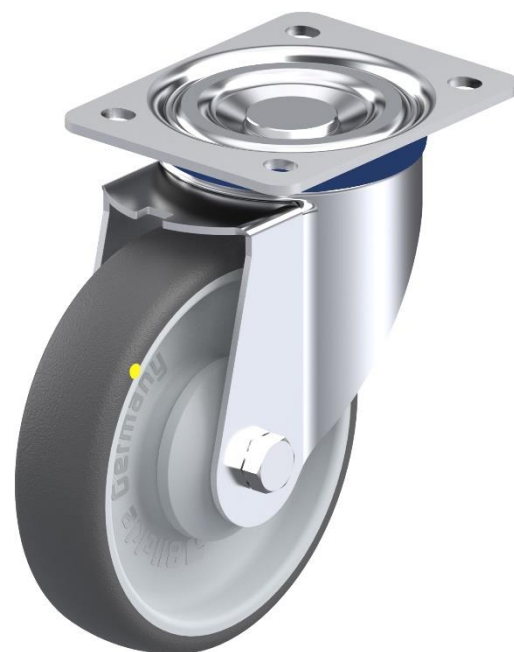


PRODUCT INFORMATION

300-Series Top Plate Castor

**Electrically conductive thermoplastic polyurethane
on nylon centre wheel**

Part number:	274700
Wheel diameter (D):	160mm
Tread width (T2):	40mm
Tread hardness:	94° Shore A
Electrical conductivity:	$\leq 10^4 \Omega$
Wheel bearing:	Additional sealed single ball bearing
Top plate size (AxB):	140x110mm
Fixing hole spacing (axb):	105x80mm
Fixing hole size (d):	11mm
Offset (F):	57mm
Overall height (H):	193mm
Load capacity 3km/h:	260kg
Rolling resistance:	Very good
Operating noise:	Good
Floor preservation:	Good



Telephone: (353) 1 452 0482
Email: info@parnells.eu

www.parnells.eu

Unit A1 - A2
Southcity Business Centre
Whitestown Way
Tallaght
Dublin D24 HT95
Ireland