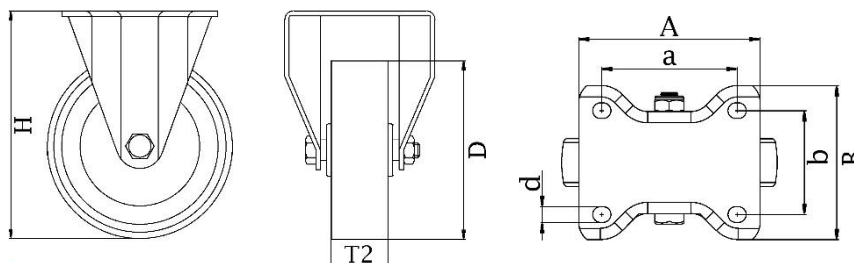


PRODUCT INFORMATION

800-Series Top Plate Castor

**Electrically conductive thermoplastic polyurethane
on nylon centre wheel**

Part number:	510010
Wheel diameter (D):	200mm
Tread width (T2):	50mm
Tread hardness:	94° Shore A
Electrical conductivity:	$\leq 10^4 \Omega$
Wheel bearing:	Ball bearings
Top plate size (AxB):	135x114mm
Fixing hole spacing (axb):	105x75-80mm
Fixing hole size (d):	11mm
Overall height (H):	245mm
Load capacity 3km/h:	520kg
Rolling resistance:	Very good
Operating noise:	Good
Floor preservation:	Good



Telephone: (353) 1 452 0482
Email: info@parnells.eu

www.parnells.eu

Unit A1 - A2
Southcity Business Centre
Whitestown Way
Tallaght
Dublin D24 HT95
Ireland