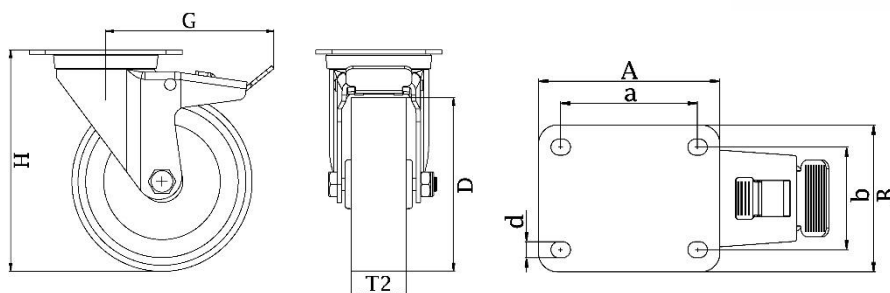


## PRODUCT INFORMATION

# 300 Series Top Plate Castor

**Material:** Zinc plated swivel/brake bracket with top plate fitting. Wheel with grey thermoplastic polyurethane tread on nylon centre.

<b>Part number:</b>	352301
<b>Wheel diameter (D):</b>	80mm
<b>Tread width (T2):</b>	32mm
<b>Tread hardness:</b>	94° Shore A
<b>Wheel bearing:</b>	Single ball bearing
<b>Top plate Size (AxB):</b>	100x80mm
<b>Fixing hole spacing (axb):</b>	80x60mm
<b>Fixing hole Size (d):</b>	9mm
<b>Brake pedal radius (G):</b>	105mm
<b>Overall height (H):</b>	111mm
<b>Load capacity 3km/h:</b>	150kg
<b>Rolling resistance:</b>	Very good
<b>Operating noise:</b>	Good
<b>Floor preservation:</b>	Good



Telephone: (353) 1 452 0482  
Email: [info@parnells.eu](mailto:info@parnells.eu)

[www.parnells.eu](http://www.parnells.eu)

Unit A1 - A2  
Southcity Business Centre  
Whitestown Way  
Tallaght  
Dublin D24 HT95  
Ireland