



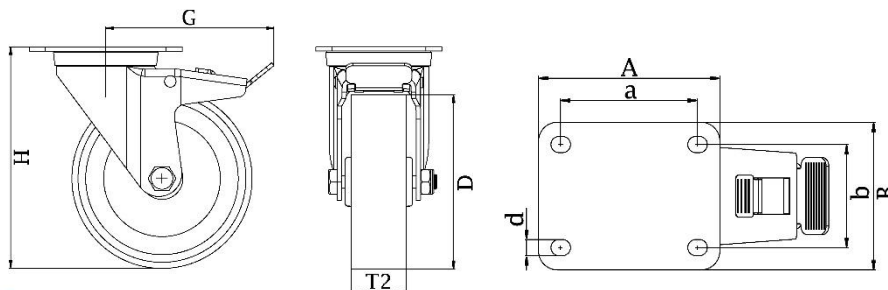
*"Experts in Specialist
Wheels & Tyres"*

PRODUCT INFORMATION

Synthetic Series Stainless Steel Top Plate Castor

Material: Swivel/brake bracket in high quality nylon 6 with stainless top plate fitting. Wheel with grey thermoplastic rubber tread on polypropylene centre, electrically conductive.

Part number:	748467
Wheel diameter (D):	100mm
Tread width (T2):	32mm
Tread hardness:	85° Shore A
Electrical conductivity:	$\leq 10^4 \Omega$
Wheel bearing:	Single ball bearing
Top plate size (AxB)	90x66mm
Fixing hole spacing (axb):	75x45/61x51mm
Fixing hole size (d):	8.5mm
Brake pedal radius (G):	113mm
Overall height (H):	135mm
Load capacity 3km/h:	70kg
Rolling resistance:	Very good
Operating noise:	Good
Floor preservation:	Good



Telephone: (353) 1 452 0482
Email: info@parnell.eu

www.parnells.eu

Unit A1 - A2
Southcity Business Centre
Whitestown Way
Tallaght
Dublin D24 HT95
Ireland