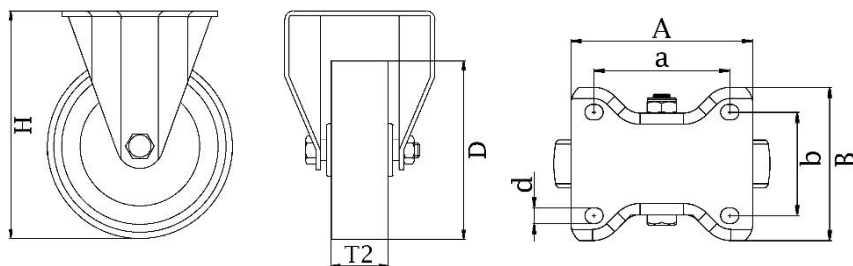


PRODUCT INFORMATION

300 Series Top Plate Castor

Material: Zinc plated fixed bracket with top plate fitting. Wheel with black pneumatic rubber tyre on plastic rim.

Part number:	352923
Wheel diameter (D):	200mm
Tyre width (T2):	50mm
Pattern / PLY:	Block / 4
Wheel bearing:	Roller bearing
Top plate size (AxB):	146x107mm
Fixing hole spacing (axb):	105x80mm
Fixing hole size (d):	11mm
Overall height (H):	233mm
Load capacity 3km/h:	100kg
Rolling resistance:	Reasonable
Operating noise:	Very good
Floor preservation:	Very good



Telephone: (353) 1 452 0482
Email: info@parnells.eu

www.parnells.eu

Unit A1 - A2
Southcity Business Centre
Whitestown Way
Tallaght
Dublin D24 HT95
Ireland