



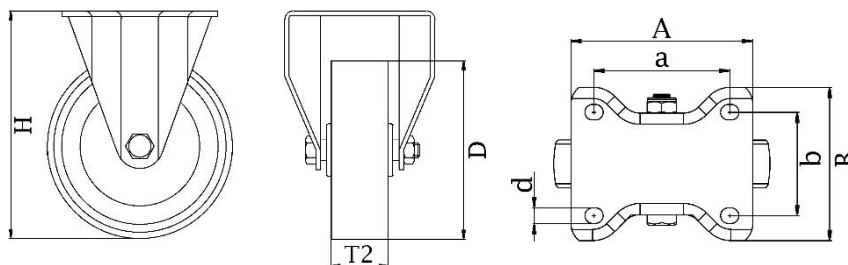
*"Experts in Specialist  
Wheels & Tyres"*

## PRODUCT INFORMATION

# HXP Series Top Plate Castor

**Material:** Zinc plated fixed bracket with top plate fitting. Wheel with black puncture proof PU-foam tyre on black plastic rim.

<b>Part number:</b>	104200
<b>Wheel size:</b>	3.00x4
<b>Wheel diameter (D):</b>	260mm
<b>Tyre width (T2):</b>	85mm
<b>Pattern:</b>	Block
<b>Wheel bearing:</b>	Roller bearing
<b>Top plate size (AxB):</b>	230x130mm
<b>Fixing hole spacing (axb):</b>	190x75mm
<b>Fixing hole size (d):</b>	14mm
<b>Overall height (H):</b>	295mm
<b>Load capacity 3km/h:</b>	150kg
<b>Rolling resistance:</b>	Reasonable
<b>Operating noise:</b>	Very good
<b>Floor preservation:</b>	Very good



Telephone: (353) 1 452 0482  
Email: [info@parnells.eu](mailto:info@parnells.eu)

[www.parnells.eu](http://www.parnells.eu)

Unit A1 - A2  
Southcity Business Centre  
Whitestown Way  
Tallaght  
Dublin D24 HT95  
Ireland