



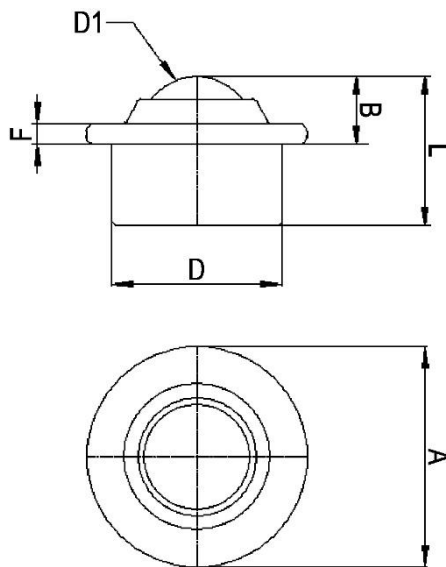
*"Experts in Specialist  
Wheels & Tyres"*

## PRODUCT INFORMATION

# Steel Ball Unit with Push Fit Fixing

**Material:** Load ball: Carbon Chrome. Small balls: Carbon Chrome. Body: Carbon steel with zinc plated finish.

<b>Part number:</b>	515013
<b>Load ball diameter (D1):</b>	15.8mm
<b>Flange diameter (A):</b>	31mm
<b>Working height of ball (B):</b>	9.5 ±0.2mm
<b>Body diameter (D):</b>	24 ±0.2mm
<b>Flange thickness (F):</b>	2.8mm
<b>Overall height (L):</b>	21mm
<b>Load capacity (ball up):</b>	80kg



Telephone: (353) 1 452 0482  
Email: [info@parnells.eu](mailto:info@parnells.eu)

[www.parnells.eu](http://www.parnells.eu)

Unit A1 - A2  
Southcity Business Centre  
Whitestown Way  
Tallaght  
Dublin D24 HT95  
Ireland