



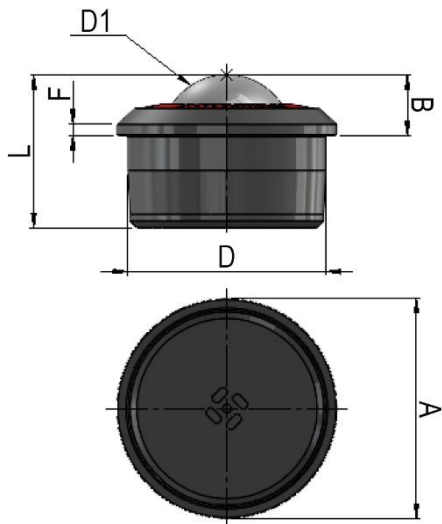
*"Experts in Specialist
Wheels & Tyres"*

PRODUCT INFORMATION

Stainless Steel Ball Unit with Push Fit Fixing

Material: Load ball: Stainless steel. Small balls: Stainless steel. Body: Carbon steel hardened with phosphate finish.

Part number:	8883016
Load ball diameter (D1):	30mm
Flange diameter (A):	50mm
Working height of ball (B):	13.8 ±0.2mm
Body diameter (D):	45 ±0.08mm
Flange thickness (F):	2.5mm
Overall height (L):	34.8mm
Load capacity (ball up):	400kg



Telephone: (353) 1 452 0482
Email: info@parnells.eu

www.parnells.eu

Unit A1 - A2
Southcity Business Centre
Whitestown Way
Tallaght
Dublin D24 HT95
Ireland